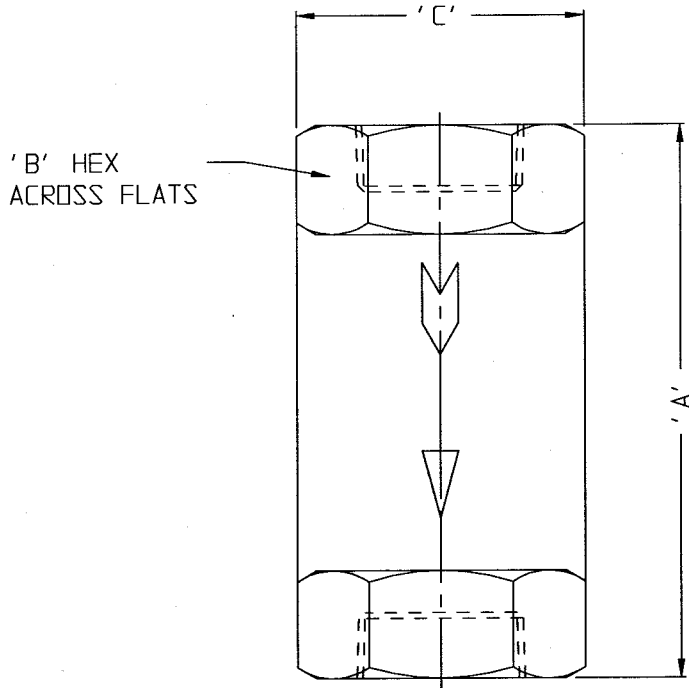


61-10X/62-10X

CUSTOMER DWG



3"	61-100	8 1/2"	4 1/8"	5 5/16"
2 1/2"	61-109	7"	3 1/2"	4 1/2"
2"	61-108	6"	3"	3 11/16"
1 1/2"	61-107	4 15/16"	2 1/2"	2 13/16"
1 1/4"	61-106	4 3/16"	2 1/8"	2 3/8"
1"	61-105 62-105	3 1/2"	1 3/4"	1 15/16"
3/4"	61-104 62-104	2 7/8"	1 3/8"	1 1/2"
1/2"	61-103 62-103	2 5/16"	1 1/8"	1 1/8"
3/8"	61-102 62-102	2 1/8"	1 1/8"	1 1/8"
1/4"	61-101 62-101	2 1/16"	1 1/8"	1 1/8"
<b>THD SIZE (NPT)</b>	<b>PART NO</b>	<b>'A'</b>	<b>'B'</b>	<b>'C'</b>

CUSTOMER DWG

**DIXON VALVE & COUPLING CO.**  
U. S. A.

TITLE BALL-CONE CHECK VALVE

DRAWN BY: 5-7-97 ANDREW JINKS      CHECKED BY: 5-7-97 [Signature]      APPROVAL: [Signature]

MAT'L 61-10X: BRASS      62-10X: STAINLESS STEEL      **61-10X/62-10X**

AGREEMENT TO MAINTAIN CONFIDENTIALITY

This drawing is owned by Dixon Valve & Coupling Co. and shall be returned upon demand. It is loaned on condition that it shall not be copied or reproduced or submitted to others without the owners consent. In accepting it subject to this condition the recipient further agrees that this drawing or any design detail or concept disclosed herein shall not be used in any way detrimental to or in competition with the Owner. If the recipient does not agree to the terms of this agreement, they shall return this drawing immediately.

